

Why should I believe in a God I can't see?

- Because there is a lot of evidence around us that there is a power greater than ourselves
- Because there are many facts that can only be explained by the existence of such a power

We can understand that it's hard to believe in a God we can't see.

We will explore the reasons for believing in a power greater than ourselves.



There is real evidence to support a belief in a God – even though we can't see Him

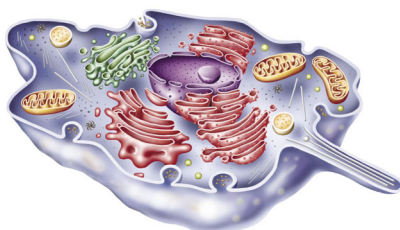
Evidence of a God we can't see.

Observable facts in science

Wherever they look, scientists find that our world is made up of distinct animals and species. There are no observable facts to support *major* development of species. This implies that a superhuman intelligence produced the different animals and species.



Where did life come from?



The cell is the basis of all life. It has many life support systems. These systems are dependent on each other and cannot exist without each other. One example is that cell walls are only made by enzymes. And yet the enzymes cannot do their job unless they are kept in place by the cell wall. It is difficult to see how the first cell appeared unless it was complete and fully functional. This implies it was created.

The laws of physics



The laws of physics are very precise. For example, the volume, pressure and temperature of the air in a car tyre are all interrelated in a very accurate way. When the temperature goes down by a certain amount, the pressure in a particular tyre will always go down by the same exact amount. The existence of these exact laws implies a “law giver”.

The universe “seemed to know we were coming”

Well known writer Professor Paul Davies wrote in his book “*The Goldilocks Enigma*”:

If almost any of the basic features of the universe, from the properties of atoms to the distribution of the galaxies, were different, life would very probably be impossible. ... a biofriendly universe looks like a fix - or 'a put-up job', to use the pithy description of the late British cosmologist Fred Hoyle. It appeared to Hoyle as if a super-intellect had been 'monkeying' with the laws of physics. He was right in his impression.

There are a large number of features about planet earth that are “just right” to support life. These critical things include:

- distance from the sun
- stability of the sun
- size of the sun and earth
- angle of axis tilt
- speed of rotation
- proportion of land and sea
- composition of the atmosphere

It looks as though the universe and our earth have been “arranged” to support life.



Unlikely accurate predictions



We can only predict the future based on what has happened in the past.

Over 2,000 years ago the Bible predicted that the Jews would be generally unpopular and have a history unlike any other nation. These detailed predictions have all happened.

These predictions must have come from a power greater than ourselves.

More Evidence of a God we can't see is in the “What is the evidence that the Bible is special?” section.

Why bother about believing in a God we can't see?



The main reason why we should think about such a power is that, left to ourselves, we have no long term future.

It is an unfortunate fact that virtually everything in our world is deteriorating. Sooner or later that includes us as well. We all share the problem that we have no long term future.

As we cannot solve this problem, we need help. But we need help from somewhere we can trust. We also need to be sure that our helper has the ability and willingness to do something about our problem.



If we can find good evidence of a God who is willing and able to help, we should at least consider whether there could be a solution to our problem.

If you take the time to look you may find this problem solved by the God of the Bible.

The God of the Bible has a realistic rescue plan in place for planet earth.

It is relevant and makes sense in the 21st century.

This plan can include you as well as the planet.

The rescue plan

It is obvious that this plan was devised by someone well acquainted with the problems of our world. It tells us of the return to the earth of Jesus Christ. He will set up a worldwide government that will tackle the problems of:

- injustice
- poverty
- illness
- ageing and death
- war and famine
- natural disasters



Have a look in a Bible at Acts 1 v 9 to 11 and Isaiah 2 v 1 to 4.

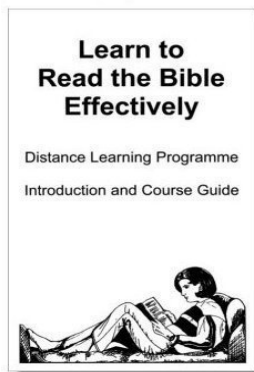
We are offered the opportunity of helping to implement this rescue plan.

Have a look at Revelation 20 v 6

You can learn a little more about this rescue plan in the “What is the meaning of life?” section.

There is abundant evidence that this plan can be trusted. Have a look at the “What is the evidence that the Bible is special?” section.

If you would like to know more about the Bible message:



www.biblecourse.f9.co.uk

Frequently asked questions...

Who are the Christadelphians? A group of people who believe that the Bible is the Word of God, and base their beliefs on what it teaches.

Why are they doing this? Our faith and belief in God makes us want to share His message of truth. We believe that the Bible is God’s message to us. We also believe that what He teaches is right and helpful in directing our lives. We feel compelled to tell everyone about the wonderful plan that God has for our earth. We want people to make their own informed decision.